
PRODUCT RECALL

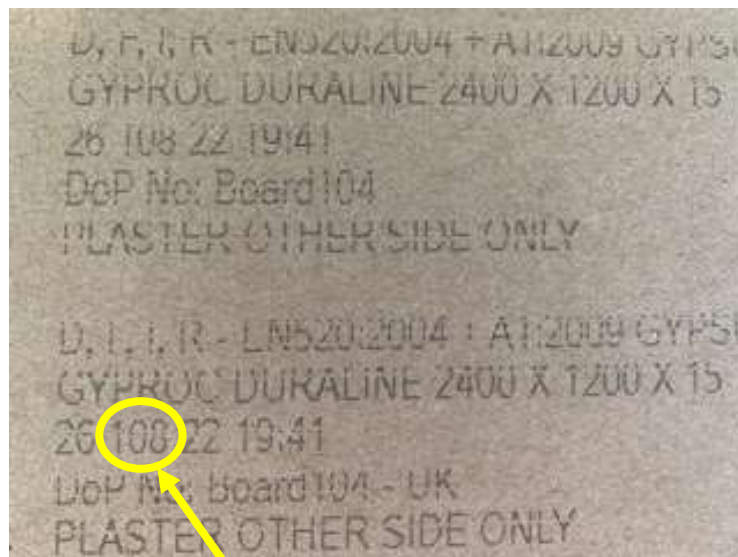
25th April 2022

BRANDED PLASTERBOARD IDENTIFICATION GUIDANCE

Our boards can be identified through the printed text that is found on the back and the edge of the product.

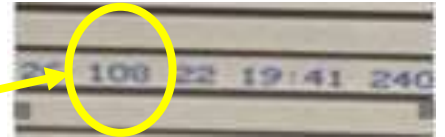
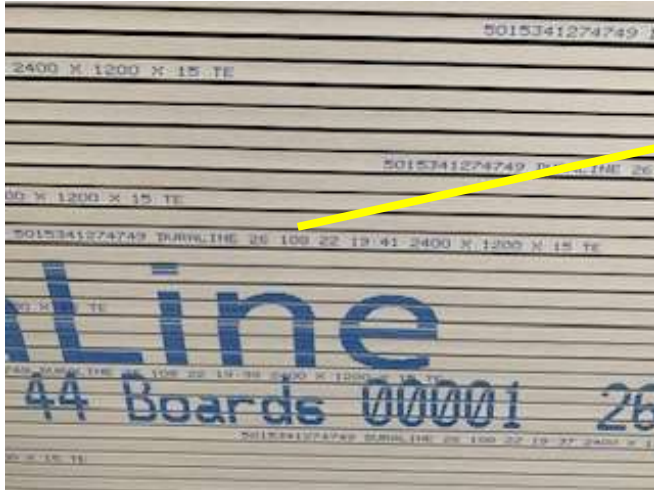
On the back of the boards the brand and product name is found at the top of the printed text and the date ID. See the example below which has highlighted the day of board production. This date is in Julian calendar format. In the example below, the board was manufactured on the 108th day of the year = 18 April 2022. Please note that the date ID numbers affected by this product recall (shown in the yellow circles in the figures below) are:

- Gyproc SoundBloc F: 102
- Gyproc DuraLine: 102, 103, 108 and 109



Printing on back of the board showing position of date ID.

On the edge of the board, the printed text can be used to identify the product. The data is the same format and date ID that can be found to the right of the product name.



Printing on side of the board showing the date ID.